



Philips Momentum
4K HDR display with
Ambiglow

Momentum
43 (42.51" / 108 cm diag.)
3840 x 2160 (4K UHD)



439M1RV

Optimized performance for next-gen gaming

Meet the most recent update of HDMI specification

- 4K / 144Hz PC gaming on the big screen
- Smooth console gaming at 4K / 120Hz
- Purpose-built for low latency gaming
- SmartImage HDR gives optimal viewing from your HDR content

Design to enhance the senses

- Ambiglow adds a new dimension to your viewing experience
- Enhanced audio with DTS Sound™

Features for gamers needs

- USB-C one cable does it all
- Built-in KVM switch to easily switch between sources
- LowBlue mode and Flicker-free easy-on-the eyes viewing
- VA display delivers awesome images with wide viewing angles
- MultiView enables simultaneous dual connect and view

PHILIPS

4K HDR display with Ambiglow
Momentum 43 (42.51" / 108 cm diag.), 3840 x 2160 (4K UHD)

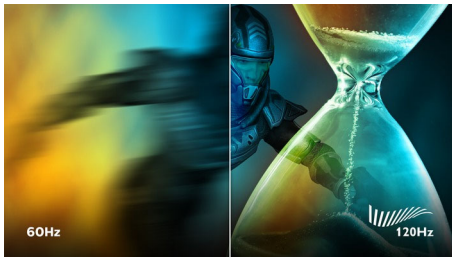
Highlights

4K / 144Hz PC gaming



PC gamers who demand a true 4K gaming experience with the fastest refresh rate of 144Hz can now enjoy even smoother performance with the included connections.

4K / 120Hz Console gaming



Game with ultra-clear 4K resolution at a smooth 120Hz refresh rate when you connect your Xbox Series X & other next-gen consoles via one of multiple HDMI 2.1 connections. A faster refresh rate ensures less skipped frames, showing enemy movement in ultra-clear, smooth motion to easily target them.

Low Latency Gaming



Unlike standard TVs, Philips Momentum gaming displays are purpose-built with low lag and lighting fast pixel response as a priority and supports fast-paced, reaction time-sensitive games. The display also provides variable refresh rate (VRR) support for Xbox Series X to achieve seamlessly smooth motion.

SmartImage HDR

Select one of SmartImage HDR modes to best suit your needs. HDR Game: Optimize for playing video games. With brighter white and darker black, the gaming scene is vivid and revealing more details, easily spot enemies hiding in the dark corner and shadows. HDR Movie: Ideal for watching HDR movie. Deliver better contrast and brightness for more realistic and immerse viewing experience. HDR Photo: Enhance red, green, and blue for lively visuals. DisplayHDR: VESA DisplayHDR certified*. Personal: Customize settings in picture menu. *Please refer to specification for HDR grade.

Ambiglow



The innovative Ambiglow technology enhances the content on the screen by creating a halo of light from the monitor. Its fast processor analyses the incoming image content, continuously adapts the color and brightness of the emitted light to match the image. Especially suited for watching movies, sports or playing games, Philips Ambiglow offers you a unique and immersive viewing experience.

DTS Sound™



DTS Sound is an audio processing solution designed to optimize the playback of music, movies, streaming and games on the PC regardless of form factors. DTS Sound enables an immersive virtual surround sound experience, complete with rich bass and dialog

439M1RV/93

enhancement and maximized volume levels free of any clipping or distortion.

USB-C

This Philips display features a USB type-C connector with power delivery. With intelligent and flexible power management, you can power charge your compatible device directly. Its slim, reversible USB-C allows for easy, one-cable connection. You can watch high-resolution video while powering up and re-charging your compatible device at the same time.

MultiClient Integrated KVM



With MultiClient Integrated KVM switch, you can control two separate PCs with one monitor-keyboard-mouse set up. A convenient button allows you to quickly switch between sources. Handy with set-ups that require dual PC computing power or sharing one large monitor to show two different PCs.

LowBlue Mode & Flicker-free



Our LowBlue Mode and Flicker-free technology have been developed to reduce eye strain and fatigue often caused by long hours in front of a monitor.



USB-C

4K UHD
144Hz4K UHD
120HzVESA CERTIFIED
DisplayHDR 1000

ambiglow

dts
SoundMultiClient
Integrated KVM4K
Ultra HD

MultiView

Specifications

Picture/Display

- LCD panel type: VA LCD
- Backlight type: W-LED system
- Panel Size: 55 inch / 139.7 cm
- Color gamut (min.): DCI-P3 Coverage: TBC%*
- Color gamut (typical): NTSC TBC%*, sRGB TBC%*
- HDR: DisplayHDR 1000 certified
- Effective viewing area: 1209.6 (H) x 680.4 (V) mm
- Aspect ratio: 16:9
- Maximum resolution: HDMI / DP: 3840 x 2160 @ 144 Hz*; USB-C: 3840 x 2160 @ 120 Hz
- Pixel Density: 80.11 PPI
- Response time (typical): 4 ms (Gray to Gray)*
- Low Input Lag
- Brightness: Normal Mode: 750 cd/m²; HDR Mode: 1200 cd/m²
- SmartContrast: Mega Infinity DCR
- Contrast ratio (typical): 4000:1
- Pixel pitch: 0.315 x 0.315 mm
- Viewing angle: 178° (H) / 178° (V), @ C/R > 10
- Picture enhancement: SmartImage game
- Display colors: Color support 1.07 billion colors
- Scanning Frequency: HDMI: 30 - 135 kHz (H) / 48 - 144 Hz (V); DP: 30 - 254 kHz (H) / 48 - 144 Hz (V); USB C: 30 - 254 kHz (H) / 48 - 120 Hz (V) -> TBC
- SmartUniformity: 95 ~ 103%
- Delta E: < 2 (sRGB)
- sRGB
- Flicker-free
- LowBlue Mode
- Ambiglow: 4-sided
- Adaptive sync
- HDMI 2.1 Feature: VRR, FRL

Connectivity

- Signal Input: HDMI 2.1 x 3, DP 1.4 x 1, USB-C x 1 (DP Alt mode, PD 65W)
- USB: USB-B x 1 (upstream), USB 3.2 x 4 (downstream with 2 fast charge B.C 1.2)
- Sync Input: Separate Sync
- Audio (In/Out): Audio out
- EasyLink (HDMI-CEC): Remote control pass-through, System audio control, System standby

Convenience

- Built-in Speakers: 7 W x 2, DTS Sound
- MultiView: PBP (2x devices)
- KVM: USB-C, USB-B
- User convenience: Power On/Off, Menu/OK, Input/Up, Sound Mode/Down, SmartImage game/Back
- OSD Languages: Brazil Portuguese, Czech, Dutch, English, Finnish, French, German, Greek, Hungarian, Italian, Japanese, Korean, Polish,

- Portuguese, Russian, Spanish, Simplified Chinese, Swedish, Turkish, Traditional Chinese, Ukrainian
- Other convenience: Kensington lock, VESA mount (200x200mm)
- Plug & Play Compatibility: DDC/CI, Mac OS X, sRGB, Windows 10 / 8.1 / 8 / 7

Stand

- Height adjustment: 110 mm
- Swivel: -/+ 20 degree
- Tilt: -5/15 degree

Power

- On mode: TBC W (typ.)
- Standby mode: TBC W (typ.)
- Off mode: TBC W (typ.)
- Power LED indicator: Operation - N.A., Off - Red, Standby - Red (breathing)
- Power supply: Internal, 100-240VAC, 50-60Hz

Dimensions

- Product with stand(max height): TBC mm
- Product without stand (mm): TBC mm
- Packaging in mm (WxHxD): TBC mm

Weight

- Product with stand (kg): TBC kg
- Product without stand (kg): TBC kg
- Product with packaging (kg): TBC kg

Operating conditions

- Temperature range (operation): 0°C to 40°C °C
- Temperature range (storage): -20°C to 60°C °C
- Relative humidity: 20%-80 %
- Altitude: Operation: +12,000ft (3,658m), Non-operation: +40,000ft (12,192m)
- MTBF: 50,000 (Excluded backlight) hour(s)

Sustainability

- Environmental and energy: RoHS, Mercury Free
- Recyclable packaging material: 100 %

Compliance and standards

- Regulatory Approvals: CB, CE Mark, KC, KCC, CCC, CECF, CEL, FCC Class B, ICES-003

Cabinet

- Color: Black
- Finish: Textured / Glossy

Accessories

- Included Accessories: Philips RC6 remote control

Design

- Designed in Amsterdam, NL



Issue date 2021-07-16
Owner: Jessica Chang
Version: 0.0.0

12 NC: 8670 001 77266
EAN: 69 51613 92040 4

Test leaflet, for internal use only!
© 2021 Koninklijke Philips N.V.
All Rights reserved.

Specifications are subject to change without notice.
Trademarks are the property of Koninklijke Philips N.V. or their respective owners.

www.philips.com

* The maximum resolution works for either HDMI input or DP input.
* For best output performance, please always ensure that your graphic card is capable of achieving the maximum resolution and refresh rate of this Philips display.
* Response time value equal to SmartResponse
* DCI-P3 Coverage based on CIE1931
* NTSC / sRGB Coverage based on CIE1931
* Adobe RGB Coverage based on CIE1931
* The monitor may look different from feature images.